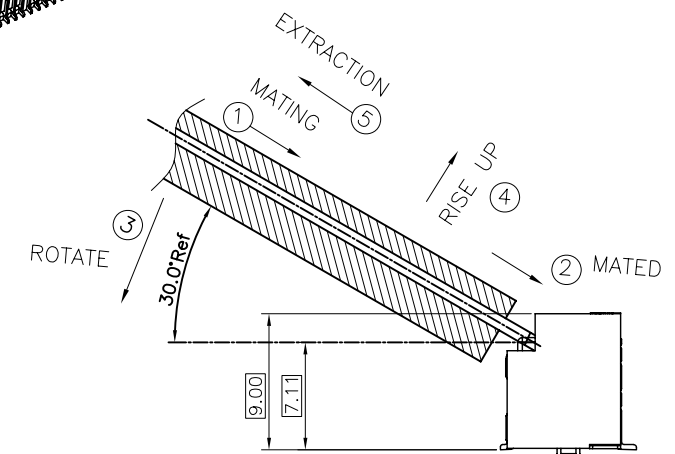
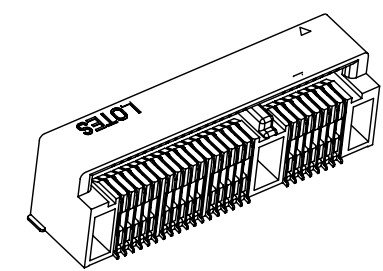
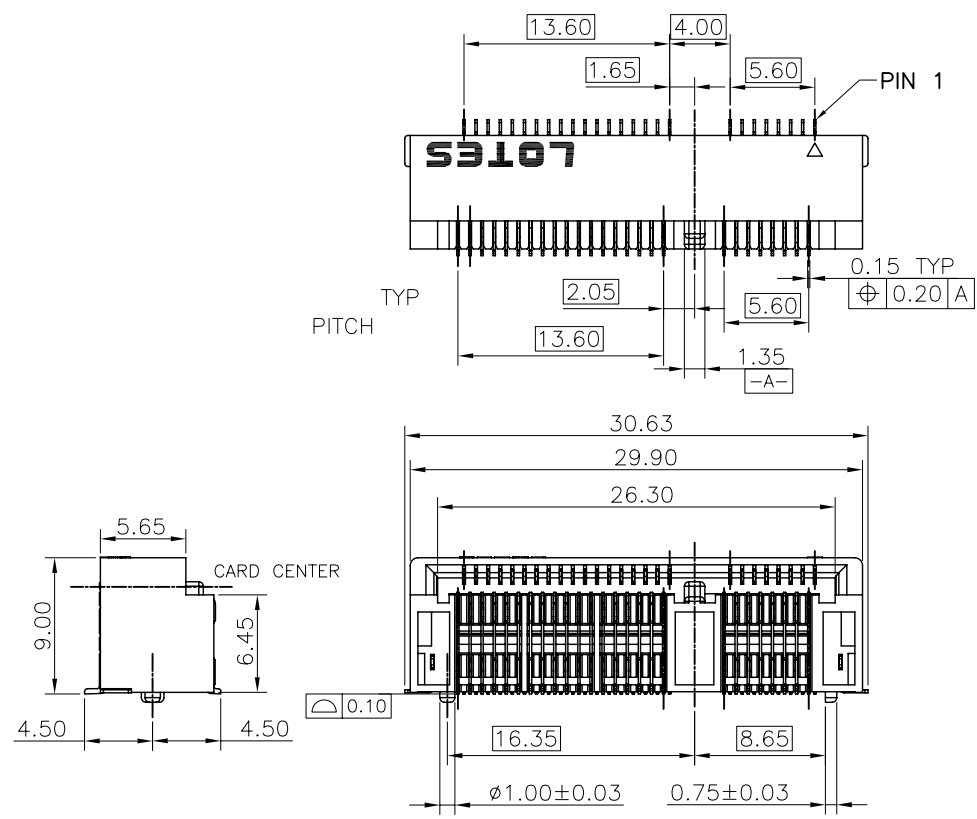


REV.	ECN NO. / DESCRIPTION	DATE
5	SN70055	3/8'07

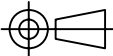


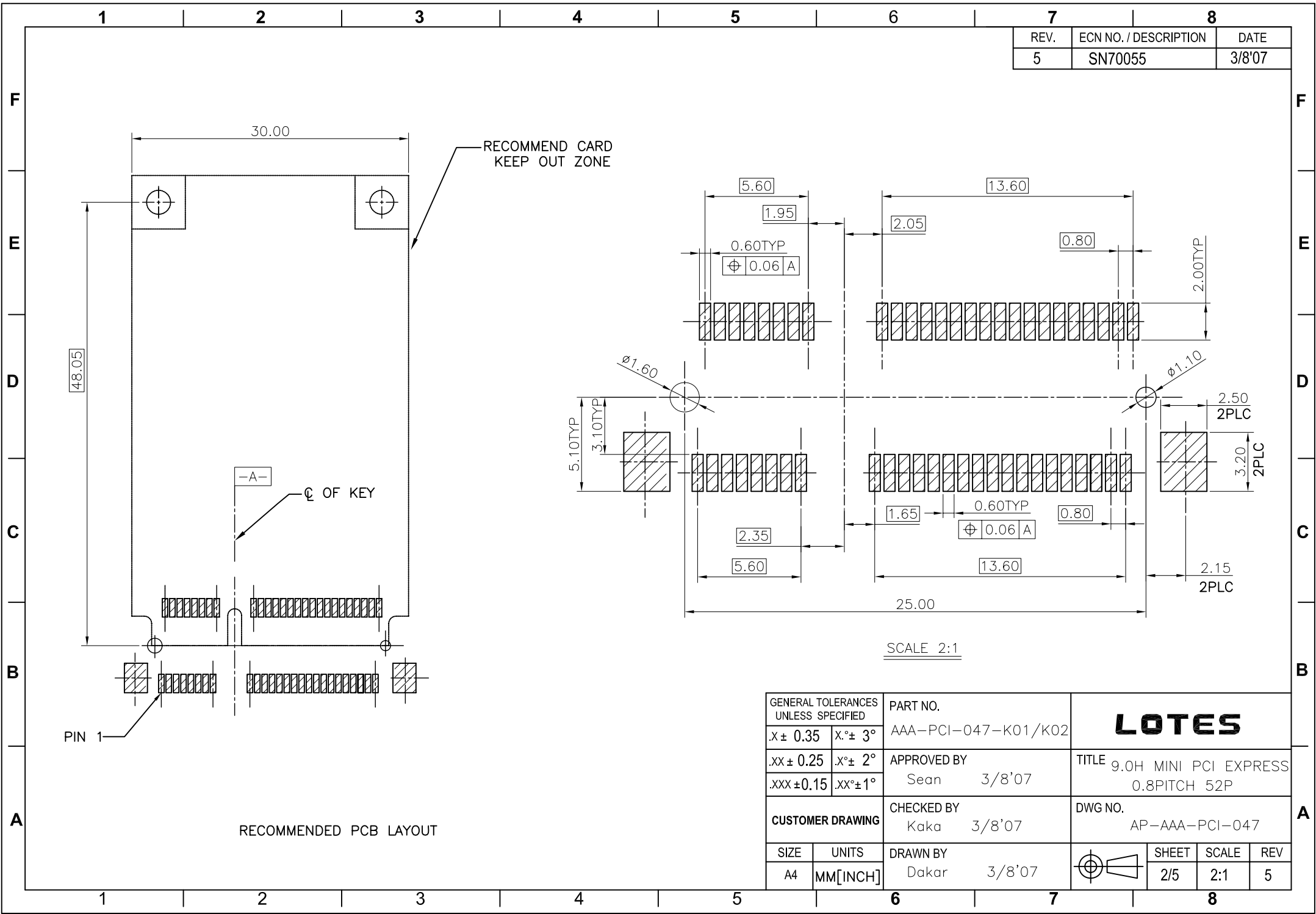
HOW TO MATE AND UNMATE

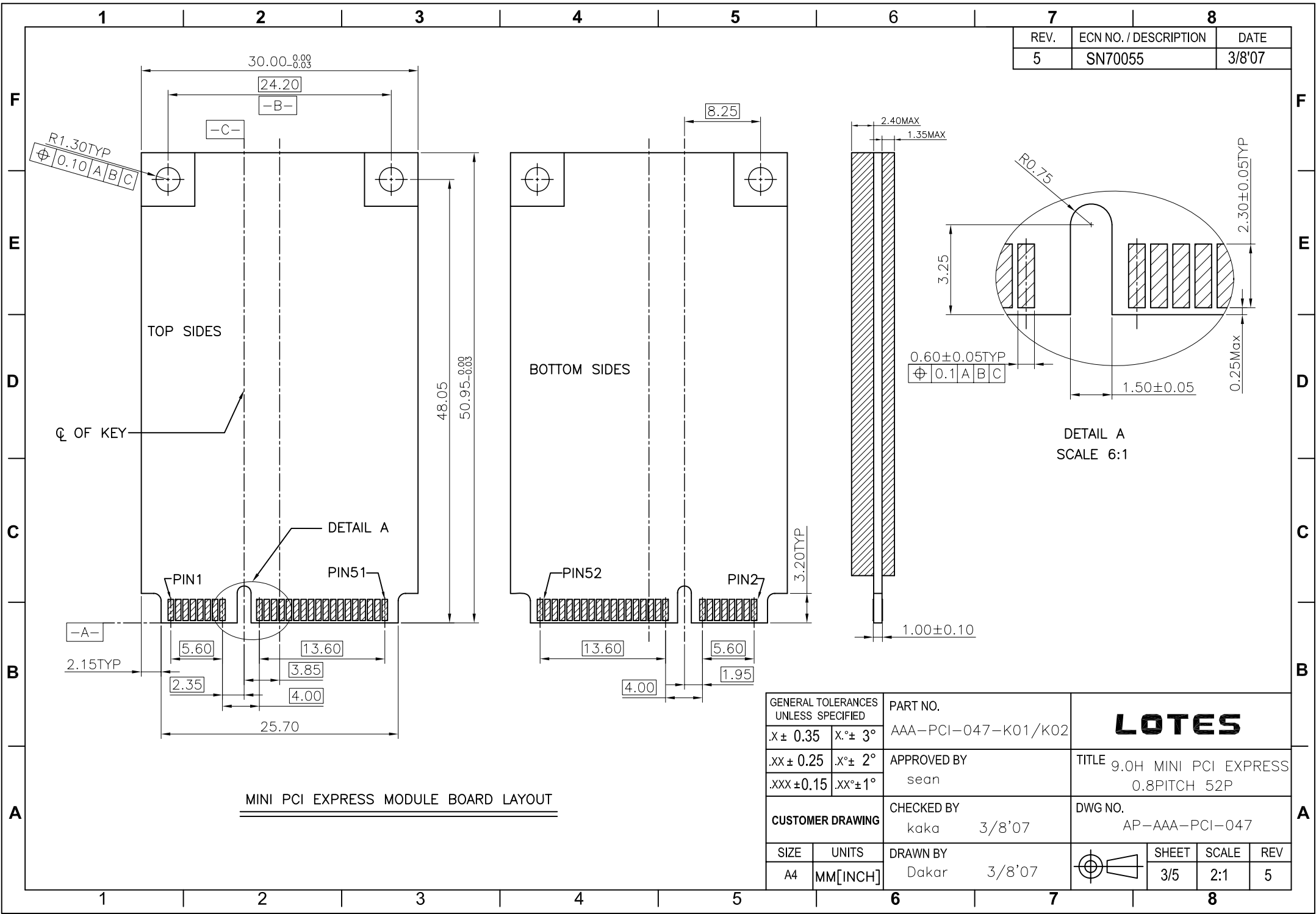
MATE: ① → ③

UNMATE: ④ → ⑤

- NOTES:
- 1.DIMENSION SHALL BE INTERPRETED PER ANSI Y14.5M-1994
 - 2.MATERIAL:
 - 1).HOUSING:HIGH TEMPERATURE THERMOPLASTIC,UL94V-0,
 - 2).CONTACT:COPPER ALLOY
 - 3).PADS: COPPER ALLOY
 - 3.FINISH:
 - 3.1 CONTACTS:
 - 1).50u"MIN Ni UNDER PLATED OVER ALL.
 - 2).GOLD PLATING ON CONTACT AREA. GOLD FLASH ON SOLDER AREA.
 - 3.2 PADS:
 - 1).60u"MIN Ni UNDER PLATED OVER ALL.
 - 2)MATTE-Tin 100u"MIN ON SOLDER AREA.
 - 4.ACCORDING TO THE ENVIROMENTAL REQUIREMENT,WARRANTY THE CONTROLLED HAZARDOUS SUBSTANCE SHOULD BE MEET LOTES'S SPECIFICATION

GENERAL TOLERANCES UNLESS SPECIFIED		PART NO.	LOTES			
.X± 0.35	X°± 3°	AAA—PCI—047—K01/K02				
.XX± 0.25	X°± 2°	APPROVED BY	TITLE 9.0H MINI PCI EXPRESS 0.8PITCH 52P			
.XXX±0.15	.XX°±1°	Sean 3/8'07				
CUSTOMER DRAWING		CHECKED BY	DWG NO. AP—AAA—PCI—047			
		Kaka 3/8'07				
SIZE	UNITS	DRAWN BY		SHEET	SCALE	REV
A4	MM[INCH]	Dakar 3/8'07		1/5	2:1	5





REV.	ECN NO. / DESCRIPTION	DATE
5	SN70055	3/8'07

GENERAL TOLERANCES UNLESS SPECIFIED		PART NO.	LOTES		
X ± 0.35	X° ± 3°	AAA-PCI-047-K01/K02	TITLE 9.0H MINI PCI EXPRESS 0.8PITCH 52P		
.XX ± 0.25	.X° ± 2°	APPROVED BY sean			
.XXX ± 0.15	.XX° ± 1°	CHECKED BY kaka 3/8'07	DWG NO. AP-AAA-PCI-047		
SIZE A4	UNITS MM[INCH]	DRAWN BY Dakar 3/8'07		SHEET 3/5	SCALE 2:1
				REV 5	

